



**Crystalclear Enterprises  
Hamilton Lodge  
58 Queens Road  
Chadderton  
Oldham  
Tel. 0161 345 1110  
E-Mail:**

[sales@cheshireluxurypools.co.uk](mailto:sales@cheshireluxurypools.co.uk)  
[www.cheshireluxurypools.co.uk](http://www.cheshireluxurypools.co.uk)

Please ask us for further information regarding up-grading your: -  
Plumbing, Heating, water sanitisation systems and all your pool needs.

# *ASSEMBLY INSTRUCTIONS*



## **ABOVE GROUND POOL SERIE OVALADA**



ATENCIÓN: READ THESE INSTRUCTIONS CAREFULLY BEFORE PROCEEDING TO ASSEMBLE YOUR SWIMMING POOL. REMIND ALL POOL USERS THAT THESE SAFETY INSTRUCTIONS MUST ALWAYS BE FOLLOWED-UP. KEEP THESE INSTRUCTIONS FOR FUTURE CONSULTATIONS.

## SAFETY GUIDELINES

- Remember that safety is the most important factor when installing the swimming pool. Safety must be given priority over any decorative aspect. Do not lean, jump, sit, stand or walk on profiles. They have not been designed to that effect.
- Do not dive or jump headfirst in your swimming pool, do not jump from a ladder or elsewhere. This pool is not deep enough to dive without risk of accident. The self-adhesive sign "Unsupervised, your child is in danger" must be placed close to or on your pool. For replacement adhesives, please contact our factory.
- Do not use your swimming pool when being under the effects of alcohol, medicines or drugs.
- To avoid drowning and injuries, do not leave tables, chairs or other objects near the swimming pool to prevent children from climbing into the pool.
- Do not install a slide on your swimming pool.
- To avoid electrocution risk, do not manipulate electrical equipment near to your swimming pool or with a wet body. Make sure that all electrical equipments is protected by a grounded switch.
- When bathing, never use metallic or punching footwear.
- If your pool has a cover on, do not allow anybody, and especially small children, to walk or play on it.
- Assign one entrance and exit for your swimming pool. This area must be kept totally clean. Remove all objects that could hurt barefooted people.
- Do not make holes in your swimming pool wall to install lights or any other devices. It could result in serious injuries, inundation, electrocution or property damage.
- For more security, we recommend to install a 122cm high fence or wall around your swimming pool made of a resistant material. All access doors/gates should have a lock installed at least at 122 cm high in order to prevent small children from opening them. If doors, windows and garden gates make part of the fence, make sure that they can be closed with a key or bolt.
- Do not use your swimming pool at night or when visibility is not good. The water of your swimming pool should be kept clean always in order to see the bottom and appreciate its depth. Users should be capable to see that the pool is not deep enough to dive. If you decide not to take into account this safety instruction, then it is your responsibility to provide users the appropriate instructions on the correct use of this product and supply sufficient light. For lightning recommendations, consult your local licensed electrical contractor on the appropriate light so as to fulfil all local and national norms of electricity and other security requirements.
- If your swimming pool is equipped with a ladder, then follow-up all safety guidelines and assembly instructions indicated in the manual.
- A ladder must be used to get in and out of the swimming pool. When not in use, the ladder should always be removed and kept in an inaccessible place.
- In order to maintain its stability, the ladder should be placed on a solid, leveled base at all times. Only one person at the time should be on the ladder
- Install the ladder where the entrance/exit of your swimming pool will be.
- Never use your ladder for other aims. The pool ladder has not been developed for other applications.
- If your swimming pool is equipped with a filter, make sure that the swimming pool is filled with water and your filter correctly connected as indicated in the manual,
- During the bathing season, the filter must work every day, long enough to renew all the water at least one time.
- Verify all parts of your pool on a frequent basis in order to detect possible failures and make sure all components are installed correctly. Always replace components with original **TOI** spare parts.
- This swimming pool has been designed for private use only. Do not use for commercial activities.
- Your children's safety depends on you! Risk is high when children's age is under 5 years! Accidents not only happen to other people! Avoid accidents and be prepared to react in case they occur!

**WARNING:** Every filter systems are up to the installation standard NF C15-100, which stipulate that every electrical appliance located less than 3.50m from the pool and easily accessible, have to be fed with very low voltage 12V. Every electrical appliance fed in 220 V, has to be located at least at 3,50m from the edge of the pool. Ask the manufacturer advice for any modification of one or several elements of the filter system.

**Supervise and act:**

- never leave a child alone and unsupervised
- assign one person to be responsible for the users' safety.
- increase supervision according to the number of pool users.
- supply inflatables to those who do not know how to swim
- teach your children how to swim as early as possible.
- wet your neck, arms and legs before going inside the water.
- learn first aid techniques, especially those of application to children.
- do not allow diving and jumping.
- do not allow sprints or violent games near or inside your swimming pool.
- children that cannot swim should not be allowed to enter the swimming pool without life jacket and without the company of an expert swimmer.
- do not leave toys inside or near the swimming pool.
- keep water clean and healthy permanently.
- store chemicals for water treatment out of children's reach;

**Keep:**

- your telephone close to the swimming pool in order not to interrupt supervision.
- inflatables and pole near the pool.

**In addition, we recommend following equipment:**

- manual or automatic cover, correctly installed.
  - electronic device detecting passers-by and persons falling in the swimming pool.
- under no circumstances, these additional equipment will substitute constant supervision.

**In case of accident:**

- take child out of the water as quickly as possible.
- call for help immediately and follow the instructions given.
- replace wet garments by hot and dry ones.

**Memorize and keep first aid telephone number close to the pool:**

- fire brigade
- ambulance, doctor, ...

Non-compliance with the safety guidelines and maintenance procedure can be harmful to health, especially for children.

## RECOMMENDATIONS FOR THE ASSEMBLY OF YOUR SWIMMING POOL

- 1) Take your time and read the instructions carefully before starting to install the swimming pool. Follow all the instructions.
- 2) This swimming pool has been designed to be easily installed. Final results will depend on your care and attention while installing the pool. The effort and care that you put into the preparation of the foundations can make a great difference in the life span of your swimming pool and its liner.
- 3) Check local laws and, if necessary, obtain the construction permits. Check local electrical and construction laws concerning the installation of swimming pools above ground level.
- 4) Do not forget that your swimming pool is like a big tank. If the pool is too full, pressure may originate a breach in the wall and cause inundation and important damages and injuries to people near the pool.
- 5) Check local laws and, if necessary, obtain the construction permits. Check local electrical and construction laws concerning the installation of swimming pools above ground level. This swimming pool contains a large amount of water and a big weight. Take special care to avoid accidents. To calculate the approximate weight of your pool, convert the capacity of liters of water, based on the equivalent of 1 kilo=1 liter.
- 6) Gather and check the tools and materials you will need to install the swimming pool.
- 7) We recommend that at least two adults assemble the pool.
- 8) Approximate time for assembly of the pool (ground leveling and filling with water excluded) is 3 hours.

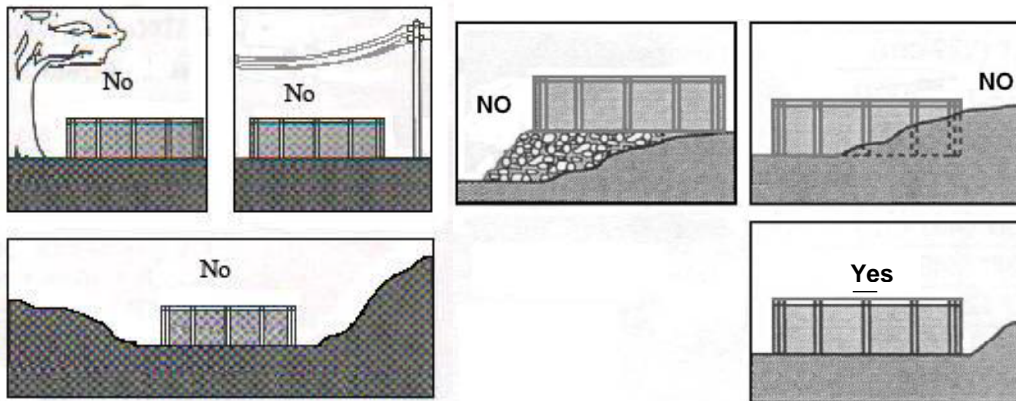
## DETERMINING THE INSTALLATION SITE FOR THE SWIMMING POOL

Take a look at your property to decide the ideal and the best site for the swimming pool.

### **The ground:**

A large area is ideal. However, if a flat area, large enough for the swimming pool is not available, then choose an area where minimum digging is required.

Under no circumstances, the swimming pool must be installed below ground level. This swimming pool must only be installed above ground and on a hard, solid ground. The swimming pool must be installed near a drain or sewage system to avoid flooding in case of breakage / leakage.



The swimming pool must be installed on a 100% plain and flat surface. Failure to observe this important safety measure can cause damage and deformation to the liner and / or the metal sheet, resulting in injuries to those who are near the swimming pool.

Never install this swimming pool inside a garage, or on a balcony, roof, terrace or any other surface that is not completely flat and solid. The maximum weight that the installation site can support must be taken into consideration.

Remove roots, grass and stones in the selected area, including those under the ground. The weight of the water will compress these elements between the liner and the earth under the swimming pool, resulting in damages. Grass left underneath the pool liner will rot and give of an unpleasant odor and stones and roots will damage the pool liner.

Avoid installing your swimming pool on fertilized ground or on any ground that has recently been treated with oil-based weed killers, chemicals or fertilizers. Avoid those areas where grass grows; it could go through the liner of your swimming pool.

Do not install your swimming pool on: marshland, tar, gravel and wood. A foundation made of leveled, solid and very compact soil / earth is the best base for your swimming pool. Do not install your swimming pool on a fragile earth or on a site that will not support the weight of the pool

Do not install your pool too close to your house, but in order to ensure maximum safety, install it where it can be readily seen and watched from the house.

**Electric wires:**

The swimming pool must be installed at a minimum distance of 6 meters from any electrical socket. To ensure maximum safety, it should never be installed directly below high voltage or medium voltage overhead electricity wires. In some communities, it is illegal to do so.

**Underground cables:**

Check for any buried electrical, telephone cables, or gas pipes at the site before you start digging to level the surface.

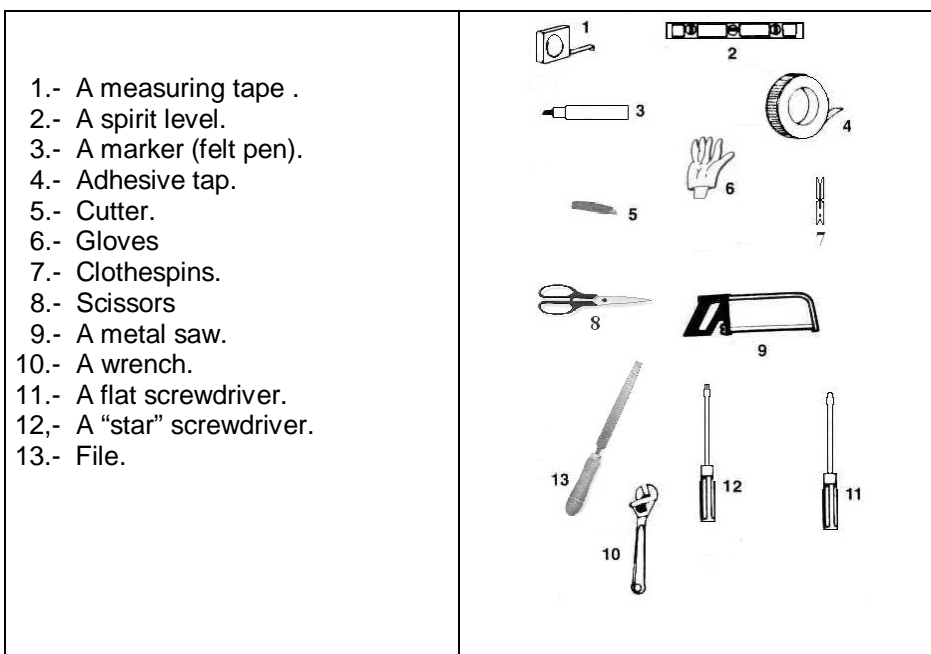
**Trees:**

Overhanging trees and their tenants (birds, insects, ...) are not the swimming pools' best friends. The resin and falling leaves and twigs can cause problems in maintaining your swimming pool's water clean. If there is a filtering system, it will have to be used more often. Install the swimming pool away from the trees.

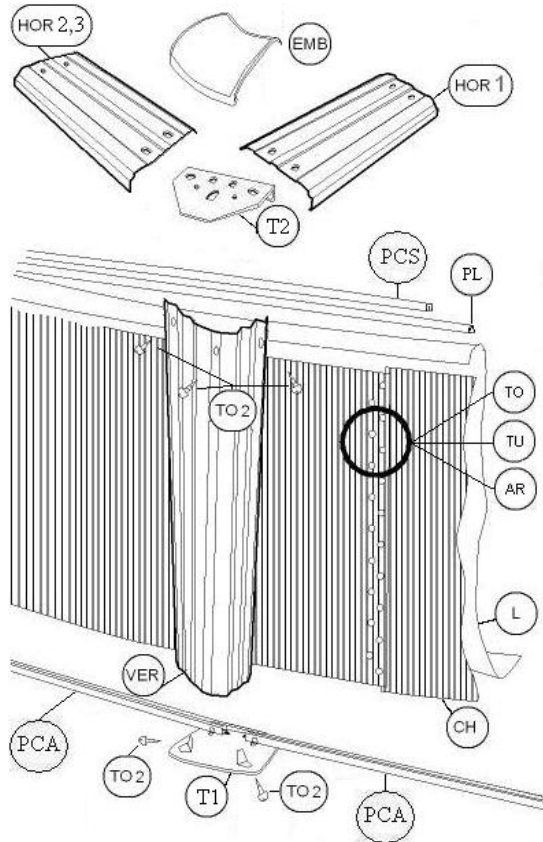
**Grounded sockets:**

In the case where the swimming pool has or uses a water filter or any other electrical device, and there is no grounded socket nearby, you must have one installed by an authorized electrical technician.

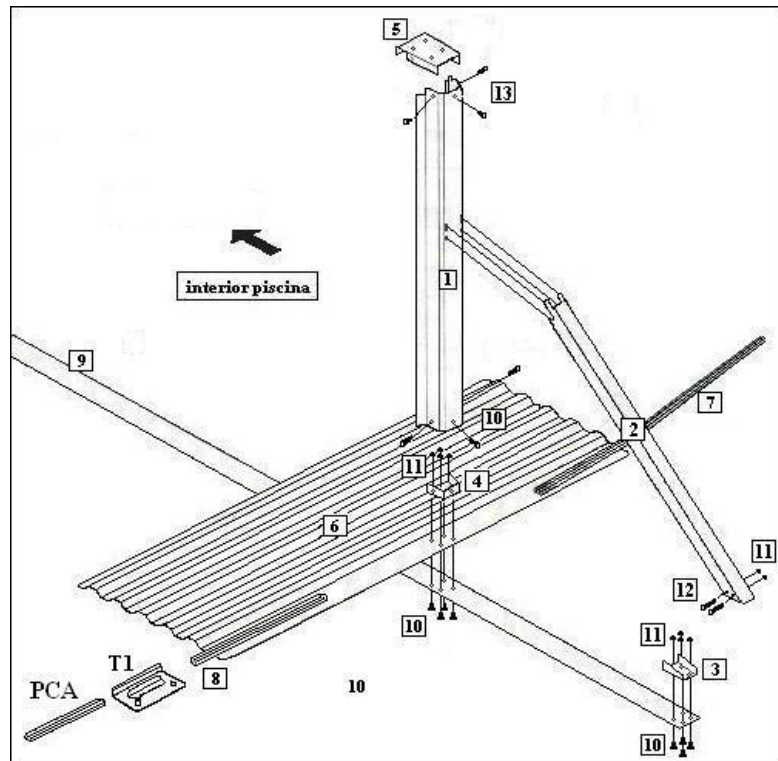
**NECESSARY TOOLS (not included)**



## PART LIST



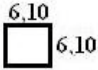
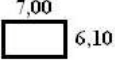
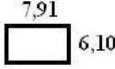
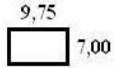
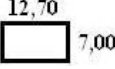
	Ø 550x12 0	Ø 640x12 0	Ø 736x36 6	Ø 914x45 7	Ø 1200x457
L	1	1	1	1	1
CH	1	1	1	1	1
TO	31	31	31	31	31
AR	31	31	31	31	31
TU	31	31	31	31	31
T1	10	10	10	10	10
T2	10	10	10	10	10
VER	10	10	10	10	10
PCA	8	8	8	8	8
HOR 1	0	2	4	4	8
HOR 2	4	4	4	4	4
HOR 3	4	4	4	4	4
PCS	11	12	13	17	21
PL	15	17	19	24	29
TO 2	90	90	90	90	90



Ref.	Key part name	Quant. of pieces 550x366	Quant. of pieces 640x366	Quant. of pieces 731x366	Quant. of pieces 914x457	Quant. of pieces 1200x457
1	Upright "A"	2	4	6	6	10
2	Diagonal "F"	2	4	6	6	10
3	Diagonal Bracket "H"	2	4	6	6	10
4	Base plate "G"	2	4	6	6	10
5	Top plate "E"	2	4	6	6	10
6	Hold down plate	2	4	6	6	10
7	Transition rail "A"	2	2	2	2	2
8	Transition rail "B"	0	2	4	4	8
9	Strap	1	2	3	3	5
10	Screw M5x15	22	44	66	66	110
11	Nut M 5	26	52	78	78	130
12	Screw M 5x55	4	8	12	12	20
13	Screw for the wall 5,5x13	14	28	42	42	70

## PREPARATION OF THE SITE

For this type of pool, we recommend making a "platform" style plinth out of concrete, 30cm larger than your pool, which must be COMPLETELY HORIZONTAL AND LEVEL.

MODEL	PLATFORM SURFACE	M2
550x366		37,21 m <sup>2</sup>
640x366		42,700 m <sup>2</sup>
731x366		48,250 m <sup>2</sup>
914x457		68,250 m <sup>2</sup>
1200x457		88,900 m <sup>2</sup>

## PREPARE THE STRAPS FOR THE BRACES

**Very important:** Always wear gloves when working. Carry out the installation between two or more people.

- Extend the brace (9) or braces (depending on model of pool) across the leveled area of the pool as shown in figure 1.
- Gently** smooth out any folds that there may be in the braces.
- Join the angle plate (3) to tens (9) using screws M5x15 (10) and nuts (11). Make sure that the angled part of the angle plate (3) is facing in the right direction (3), as illustrated in photos 1, 2 and 3. The angle plate (3) must be joined to the strip at its upper part, tighten the nuts in random order.
- Repeat this process on each side of the strap and for each strap.

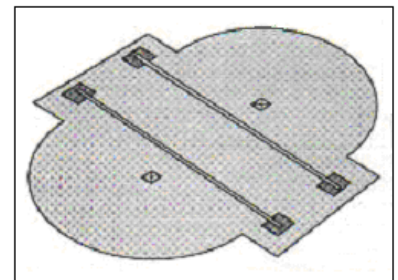


fig. 1

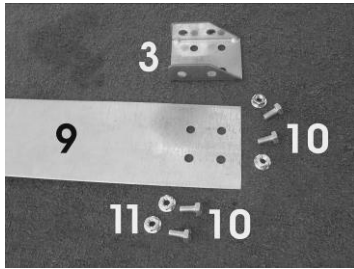


photo 1

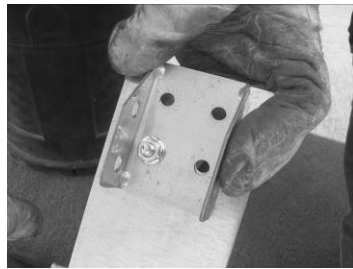


photo 2

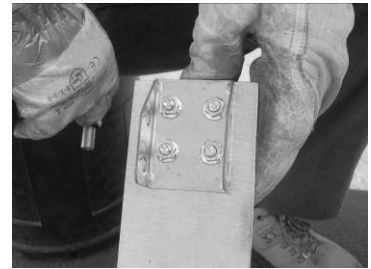


photo 3

## INSTALLATION OF BASE PLATE AND LOWER PLATE

- a. Gently lift strap (9) and insert four screws M5x15 (10) into the holes nearest the centre of the pool. Make sure that the screw heads are pointing towards the ground. Place the strap back on the ground and place the base plate (6) and then the lower plate (4) (as shown in photos 4, 5 and 6) onto the screws protruding through the strap. Place the nuts (11) onto the screws and tighten in a random order. Before tightening, check that the base plate is not at an angle.
- b. Repeat this process on each side of the strap and for each strap.

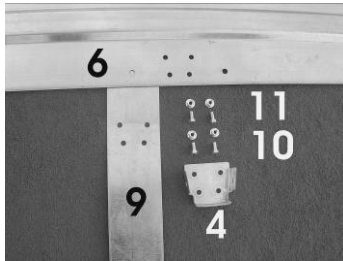


photo 4

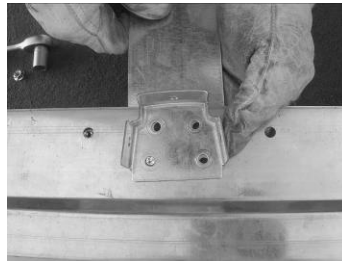


photo 5

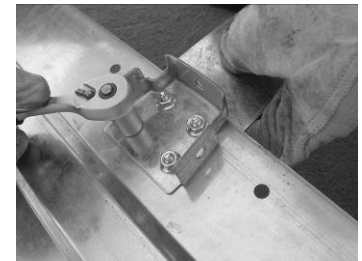


photo 6

## INSTALLATION OF THE VERTICALS

- a. Situate one of the vertical columns (1) on the lower plate (4), fix the column (1) to plate "G" with screws M5x15 (10) and corresponding nuts (11). Tighten the nuts in random order (photos 7, 8, 9 and 10).
- b. Check that there is a gap of approximately 2 mm underneath the flange at the lower end of each vertical section, so that the lower "C" sections can slide in easily.
- c. Repeat steps (a) to (b) for the other side of the pool.

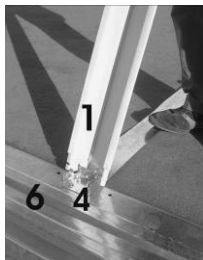


photo 7

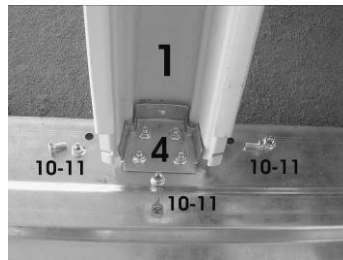


photo 8



photo 9



photo 10



## INSTALLATION OF COLUMN STIFFENER

- a. Place the stiffener (2) in an almost horizontal position and insert the four flanges on the end of the stiffener into the grooves in the vertical column (1), photos 11, 12, 13 and 14.
- b. Push the stiffener (2) forward until you can see the four flanges inside the vertical column (1), whilst at the same time moving the lower end of the stiffener towards the angle plate (3) in the base strap, fit the angle plate (3) into the stiffener (2), photos 15 and 16.
- b. Screw the stiffener (2) to the lower plate (3) with two screws (12) and the corresponding nuts (11). Do not tighten excessively, just enough to ensure secure anchoring, photos 17 and 18.
- c. Repeat steps (a) to (c) on the other side of the strap and for each strap.

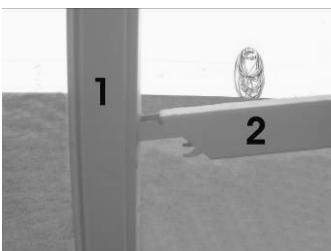


photo 11



photo 12



photo 13



photo 14

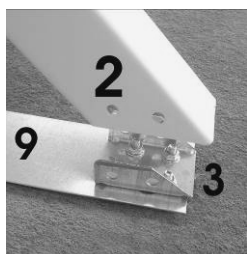


photo 15

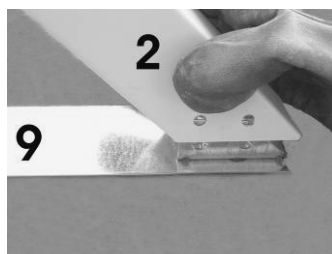


photo 16

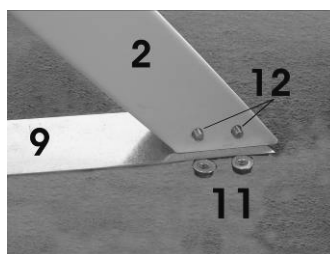


photo 17

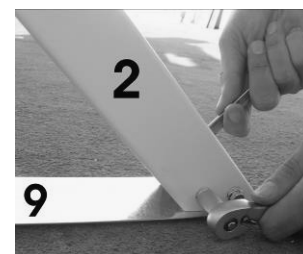


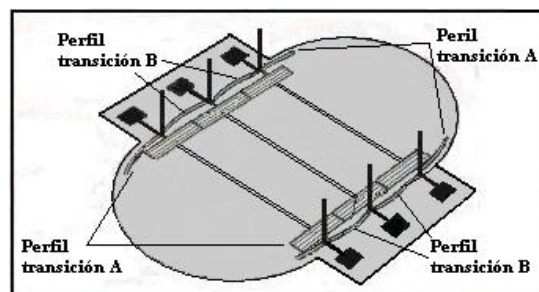
photo 18

## ASSEMBLY OF POOL BASE

### Install the curved transition sections

- Each pool model has two, three or four different types of curved lower sections. The sections are given a number depending on their position, fig. 2. Consult the table below to choose the type and quantity of lower sections suitable for your pool.

Fig. 2



Transition sections table

	Transition section A	Transition section B	Measurement
549x366 cm.	850.015 x 4	not applicable	± 1.420 mm x 4
640x366 cm.	850.021 x 4	850.019 x 2	± 1.130 mm x 4 ± 1.430 mm x 2
731x366 cm.	850.021 x 4	850.017 x 4	± 1.132 mm x 4 ± 1.130 mm x 4
914x457cm.	850.019 x 4	850.019 x 4	± 1.430 mm x 8
12x457cm.	850.019 x 4	850.019 x 8	± 1.430 mm x 12

- a. If your pool is the 550x120 model, insert the transition sections A on each side of the notches in the vertical columns (1). For other models, first insert transition sections B, fig. 2, photo 19, between the vertical columns (1) so that they fit into the notch of the vertical column (1). Make sure that the transition section groove is facing upwards, photo 20.
- b. Insert transition sections A. Slide each end of the section until it fits into the notch in the vertical column (photo 21).
- c. Repeat steps a, b, on the other side of the pool.

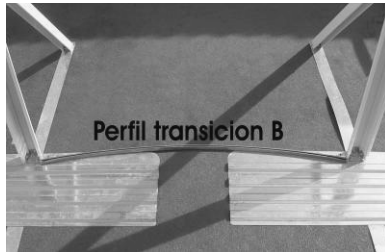


photo 19



photo 20

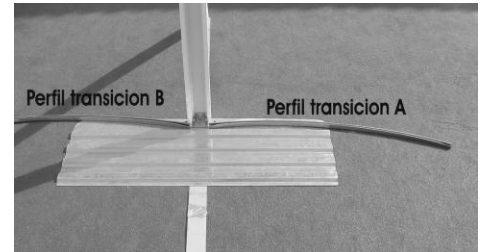


photo 21

**Important:** Ensure that transition sections A and B are correctly placed and adjusted in the grooves of vertical columns 1.

Install the PCA lower curved sections

- a. After transition sections A, put in place plate T1, then the PCA lower section, until completing a semi-circle, photo 22. The PCA transition sections must go into plate T1, photos 23 and 24. Leave a gap of 5 mm between sections, photo 25
- b. Repeat this process for the other side of the pool.

**Important:** Leave a space of +/- 5 mm between sections.

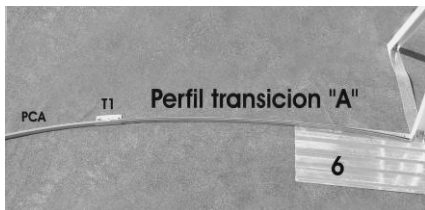


photo 22

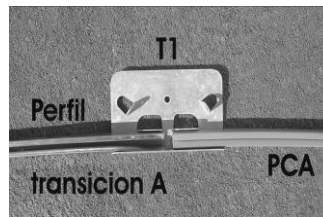


photo 23

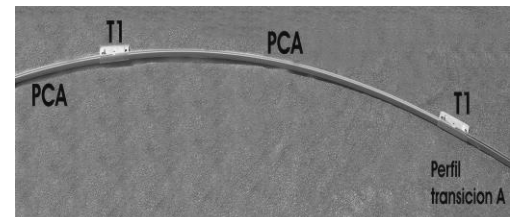


photo 24

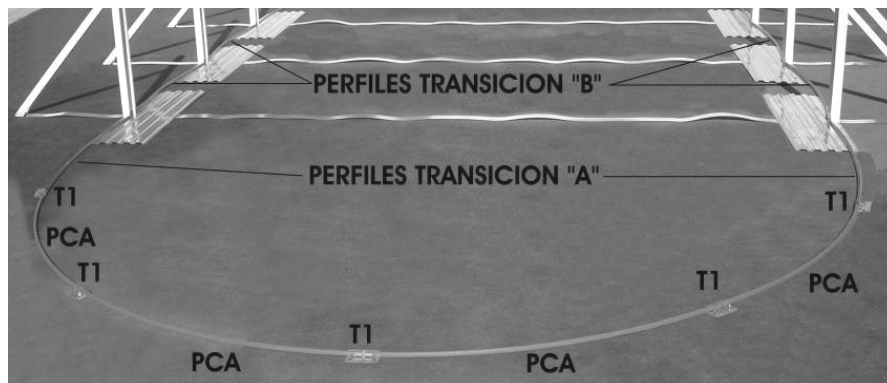


photo 25

## ASSEMBLY OF STEEL WALL

We recommend that two or more people do the installation, and on a still day with no wind. For safety reasons, wear gloves to protect your hands from the metal edges. During installation, do not fold the wall and unroll it with care.

- a) Place the pool wall vertically (label upwards) on a piece of cardboard in the centre of the circle, this will make it easier to unroll and prevent scratching the bottom of the wall, photo 26.
- b) Without unfolding completely, place the wall into the grooves in the lower sections, photo 28. The beginning of the wall should be on a base plate (T1), photo 27, generally the central plate of the semi-circle so that the skimmer opening is on the same side.

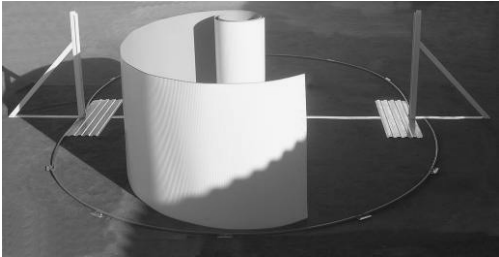


photo 26

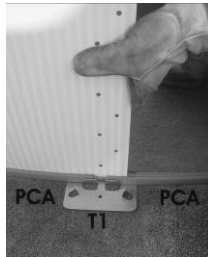


photo 27

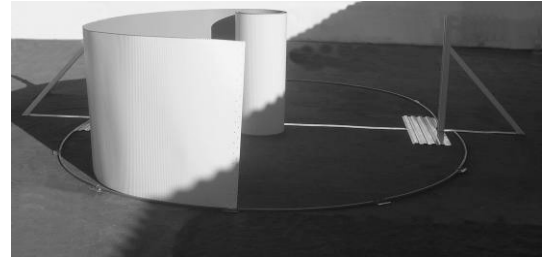


photo 28

**Important:** Insert the wall into the sections, checking that they are securely inserted into the PCA section grooves, photo 29. Check that the transition sections are correctly positioned, photo 30. To prevent the pool wall from falling inwards, attach with tape to the vertical columns (1), photo 31. You can also position the upper plate (5) fixing the strip, photo 32.

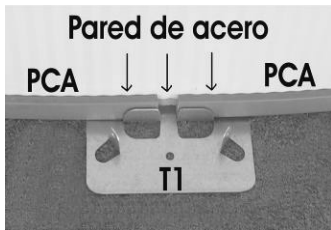


photo 29



photo 30



photo 31



photo 32

- c) Complete the circle of the wall and make sure the holes are aligned then fix with screws, remembering that the screw heads must be on the inner side of the wall and the washers and nuts on the outside, photos 33 to 37.



photo 33



photo 34



photo 35



photo 36



photo 37

**Very important:** Place all the screws in the metal strip with the pointed end of the screw upwards, leaving the last hole free. Tighten all the screws using a screwdriver and a spanner.

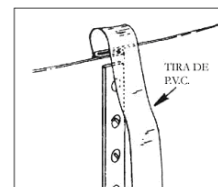


Fig. 3

- Using a strip of PVC, cover the bolt heads on the inside of the pool wall to protect the liner from rubbing against objects, which is the main cause of tears in the liner (fig. 3). Stick the strip with glue for PVC.
- Cover the inside border of the circle using clean sand that is free of any stones or foreign objects. Press the sand into a vertical triangular shaped layer that covers the sections and the inside part of the metal wall. The height of this triangular layer must not exceed 7 cm. (fig. 4). In this way, you will prevent the liner from sliding under the metal wall and being damaged due to the pressure and the weight of the water. Along the sides of the pool, each of the buttresses makes the wall scallop inward slightly. The cove at the bottom of the wall will be a little narrower and shorter at these points. Make sure the dimensions of the cove where it passes the buttresses match diagram 17 for a correctly shaped cove.

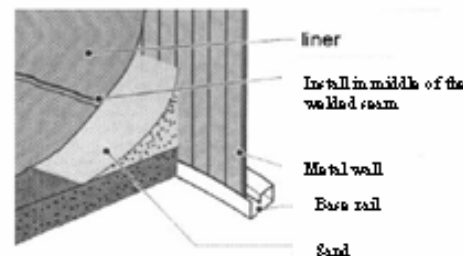


Fig. 4

## INSTALLING THE LINER

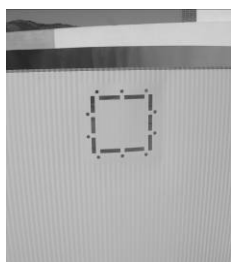


foto 38

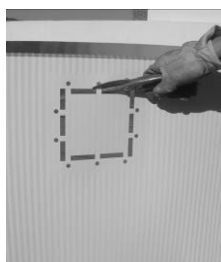


foto 39



foto 40



foto 41



foto 42

**Important:** The liner is best installed by two or more people. The PVC used for our liners has been designed to withstand long periods of exposure to sunlight and UV rays. Under some climate and use conditions, its characteristics may vary slightly. Do not walk on the liner wearing shoes, do not throw tools onto the liner, and do not place any sharp objects on the liner.

The liner is the most important and fragile component of the pool. Unpack it without using a knife or any other sharp tool and separate the liner from the rest of the components. Store it in a safe place where it is not likely to be punctured or damaged by tools. Choose a sunny day to install the liner, when the temperature is at least 20°. The liner is manufactured from a vinyl based, highly flexible material and is designed to stretch during installation; this is why it must be warmed through when installed into your pool.

- Place the liner in the centre of the pool, photo 43, and unfold it lengthwise along the pool. The central seam that joins the base (floor) of the pool must be perfectly centered. Important: As you unfold the liner, flip it so that the rough part faces upwards and the shiny part downwards.
- Lift the sides of the liner to cover the top edge of the pool and hold it in place with pegs, photos 45 and 46. Then remove the surplus part of the liner, pulling it down towards the base of the pool gently, avoiding sharp tugs.
- Whilst the pool is filling, continue removing liner surplus with your hands, photo 47. This will make the liner fit flush to the pool walls, smooth out any surplus again by pulling gently.

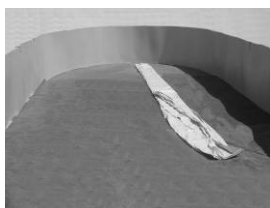


photo 43



photo 44



photo 45



photo 46



photo 47

It is important that the liner is properly centered, taut and with as few folds as possible. To remove folds from the liner on the base of the pool, take off your shoes and smooth the liner out towards the sides with your feet. Check that the water is evenly distributed, without forming pools which indicate that the ground underneath has dips. If the water is higher at one side, this means that the ground is not level. If this occurs, you must empty the pool, disassemble all the components and start the assembly over after levelling the ground. It is extremely important that the pool is perfectly level.

### INSTALLATION OF THE UPPER PROTECTIVE SECTION (PL)

- a) Remove the pegs as you install the protective section (PL) on top of the liner and around the perimeter of the pool, photos 48 and 49. Leave +/- 5 cm of liner on the outside of the strip, avoid wrinkles, do not pull tight.
- b) Mark and cut off the protector surplus, photos 50 and 51.



photo 48



photo 49

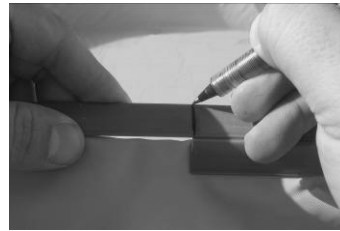


photo 50

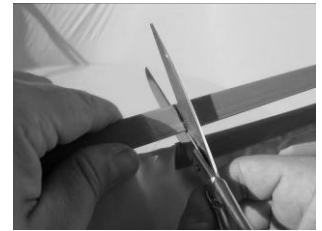


photo 51

### INSTALLATION OF UPPER SECTION (PCS)

- a) Position the upper section (PCS) on top of the protective section (PL) around the entire pool perimeter, photo 52.
- b) Mark and cut off the protector surplus, photos 53 and 54. To prevent the pool wall from falling inwards, place the upper plate (5) on the central columns (1), photo 55.



photo 52

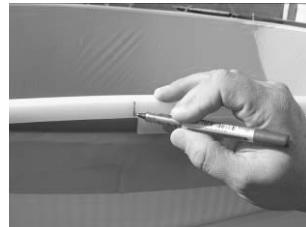


photo 53



photo 54

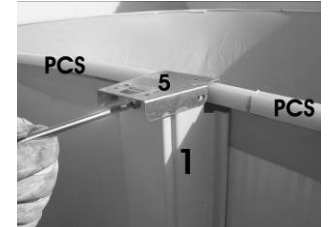


photo 55

### ASSEMBLY OF VERTICAL SECTIONS (VER)

Distribute the vertical sections around the pool and place plate T2 onto the upper part of the pool, centre photo.

- a. Align the lower part of one of the vertical sections (VER) with the two small tabs on the base plates (T1). The tabs must be on the inside of the vertical section.
- b. Align the openings for positioning screws TO2, on either side of the vertical section, making sure that they attach to the holes in the T1 plate tabs, photos 56 and 57.
- c. Place an upper section (T2) onto the top edge of the pool and on a vertical column (VER), with the tabs on the inside of the section, photo 58.
- d. Align the openings for positioning screws TO2 in the three holes in the vertical section, making sure they fit into the T2 tab holes, photo 59.
- e. Repeat steps a, b, c, d in the other sections around the pool.





photo 56



photo 57



photo 58



photo 59

### ASSEMBLY OF HORIZONTAL PROFILES

- a. Install the upper sections HOR1, (straight cut) above columns 1, placing their ends on the upper plate (5) and using hole A (photo 64), photos 60, 61. Insert and tighten, but not much, screws 13. Pool models 550x366 do not have this upper section, so in this case you start with section HOR2, (with a point) section b.
- b. Position all the upper sections HOR2, (with a point) above columns 1 and the other end on plate T2, photos 62, 63. Align the holes, insert and tighten, but not too much, screws TO2.
- c. Place all the upper sections HOR3 onto T2 plates, photo 65. Align the holes, insert and tighten, but not too much, screws TO2.
- d. Adjust the upper sections until they are together but not on top of each other. Tighten the screws, photo 66.

**Important:** If any of the vertical columns (VER) is not straight, adjust by **gently** tapping the base plate using a hammer on a piece of wood.



photo 60



photo 61



photo 62



photo 63

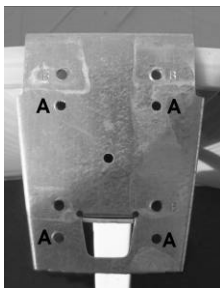


photo 64



photo 65



photo 66

## ASSEMBLY OF TOP CONNECTOS

Align a top connectos with the ends of the upper sections. Hook the trim underneath the internal edges of the upper sections (photo 67) and pull towards you (photo 68), hooking the trim onto the external part, photo 69.



photo 67

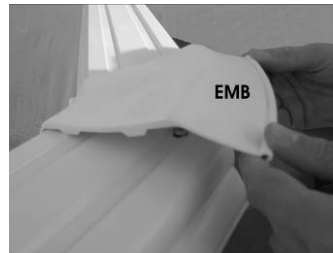


photo 68

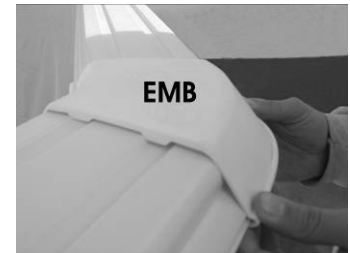
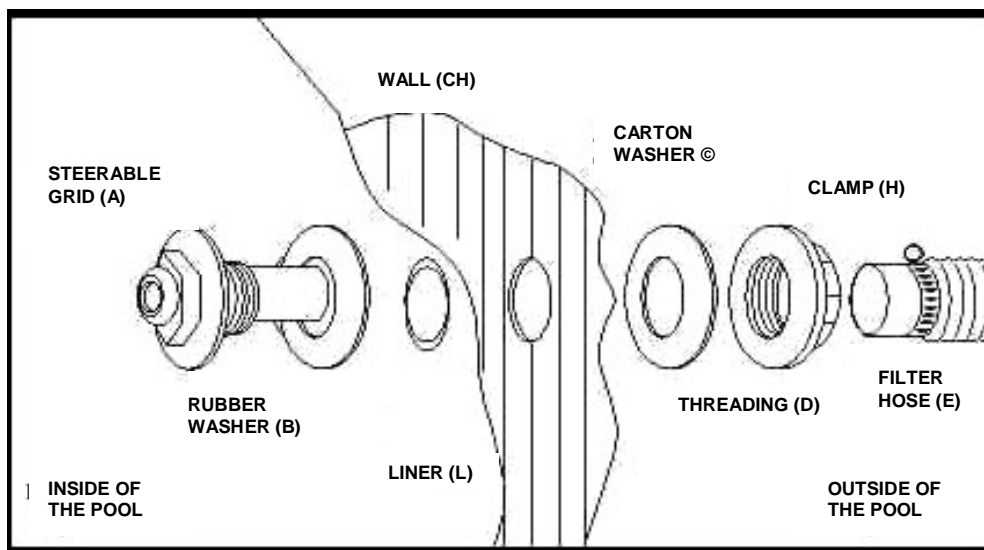


photo 69

## INSTALLING THE RETURN VALVE



- 1) Mark the holes on the liner (L) with a felt pen. By using a sharp blade, cut an "X" on the liner covering the holes, while holding the liner against the wall. The "X" should not exceed the size of the holes.
- 2) Cover the connection threading with teflon.
- 3) Place the rubber washer (B) on the steerable grid (A) and place it into the hole on the inside of the pool. From the inside to the outside, cut the piece of liner that exceeds on the outside.
- 4) Place the carton washer © on the outside of the pool and while holding the connection from the inside, tighten the threading (D) of the large nut. Introduce the filter hose (E) and fix it with a clamp (H). Repeat this operation for the second connection. Make sure that the liner is free of wrinkles.

For a more efficient filtration, we advise to direct the water jet. For this purpose, loosen the clamp. Move the directionable ball towards one of the sides of the swimming pool and slightly to the top and tighten the clamp again. In this way, the impurities will be directed towards the skimmer.

**IMPORTANT:** To avoid leaks, re-tighten the nuts after 48 hours.





## SWIMMING POOL MAINTENANCE

### Water maintenance

All swimming pools need chemical treatment to maintain the water disinfected and crystal clear. Consult your chemical products supplier to determine those that are best for your needs. Water treatment procedure is not the same in all regions, because it depends on the water quality in each region.

The best water quality is obtained by using the right preventive treatment. To prevent the growth of algae and bacteria, use bactericide, algaecide, water pH correctors and flocculants (except for cartridge filters). Apply the first chlorine treatment within 24 hours of filling the pool.

Never add chemical products directly to the water. Chemicals must be diluted before being introduced into the water. Otherwise, the liner could be damaged.

However, it is easier to keep the water clean than to clean contaminated water. Use your filter frequently.

Water maintenance is the most important factor in making your pool liner look excellent and last for a long time. Therefore, follow the instructions in the filter manual. The filter capacity must be high enough to filter the water of the pool 3 times in every 24 hours. The filter must be connected when there is nobody in the pool.

Make sure to check the water at least once a week, to keep the pool in optimum conditions.

Make sure that you do the following on frequent basis:

- a) Analyze the water pH and make sure it is between 7.2 and 7.6.
- b) Analyze the chlorine level and make sure it is between 0.5 and 2 grams per cubic meter.
- c) Remove any leaves and insects from the water.

Make sure that you do the following on weekly basis:

- a) Add the correct 'maintenance quantity' of algaecide.
- b) Add anticalcareous if lime is formed or the water is hard.
- c) Use flocculants to improve filtering (except when using a cartridge filter).

### Handling chemical products and safety measures.

The following precautions must be taken when handling chemical products:

- 1) Use gloves to protect your hands and masks or goggles for eye protection.
- 2) No smoking where the products are stored or used. Many products are flammable.
- 3) Wash your hands and face after using the products.
- 4) Store the products in a dark and dry place. Do not leave the products in the sun.
- 5) Make sure that the containers are closed. Tighten their caps or lids.
- 6) Do not leave the products within the reach of children. Make sure that the products are stored in a high and safe place.
- 7) Do not reuse the empty containers.
- 8) Keep the products in their original containers.
- 9) Do not remove the labels from the containers.
- 10) Make sure that the storage area for chemical products has proper ventilation.
- 11) When raining, increase the level of chlor and antialgae-bactericide
- 12) When adding water in the pool, check again the chlor and antialgae-bactericide level.
- 13) Well ventilate the place where the chemical products are stored.

## Pool maintenance

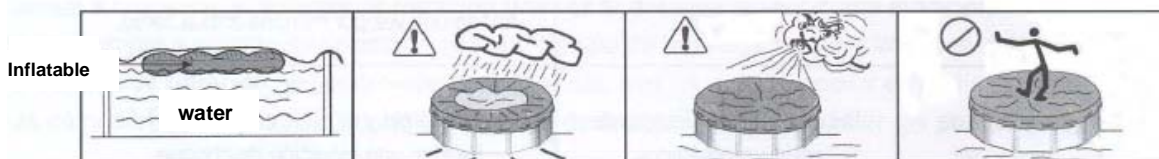
After your pool has been completely installed, follow these instructions to keep it clean and in good condition.

1. Liner
  - a. Regularly check for leaks in the liner.
  - b. Use the repair kit for small repairs on the liner.
2. Pool wall
  - a. Keep the pool wall clean. Clean the wall with a neutral soap. Do not use abrasives, chemicals or cleaning solutions.
  - b. Clean up spilt chemical product, used for water treatment, right away.
  - c. Coat all showing screw heads with clear outdoor varnish.
  - d. Check the metal parts for rust, at least once a year.
  - e. Coat all scratches and rusted areas with an anti-rust paint. Follow the instructions for paint application.
  - f. At the end of the season, drain the water until the water level is 30 cm. Remove the upper part of the liner and check for possible rust on the inner side of the pool wall.
  - g. Pay special attention to leaks in the filter and outlet holes. Leaks must be repaired right away.

## Care during winter months

**If the pool is not disassembled during the winter**, compliment following instructions at the end of the season to prepare your swimming pool for the winter. During wintering, do not drain all the water. Never leave a swimming pool dry outside. Decrease the water level just below the skimmer opening. Cover the pool with a cover. To keep the cover flat, place an inflatable object or floater between the water and the cover. This way, the liner is not damaged by rain and / or freezing. You can also add a chemical product to the water in order to protect the liner against freezing. This product also facilitates the cleaning of the liner after the winter time.

To avoid that the water starts freezing, let several empty plastic bottles (or balls made of Porespan) float on the water. In case of snow, remove the snow of the cover regularly so as to avoid extra weight on the cover.

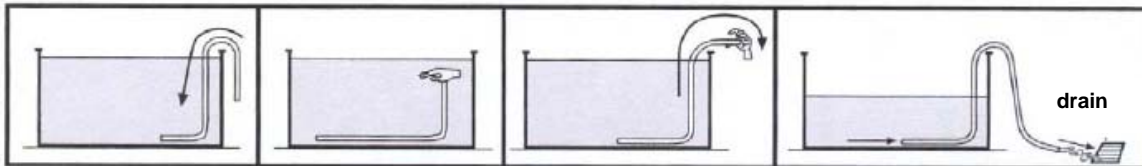


1. Check all joints and screws.
  - a. Check that all joints are correctly adjusted. Check that the pool wall has not come out of the lower profiles.
  - b. Check that the screws are tight.
2. Check rusted areas
  - a. Paint all scratches or rusted areas using anti-rust paint.
3. Check liner
  - a. Check that the upper part of the liner is still joined to the pool wall with plastic copings. DO NOT remove the pool liner. Removal of the liner shall void the product warrantee and/or guaranty.
4. Find any leaks
  - a. Check that there are no leaks in the liner. Leaks can cause great damage to your pool during the winter.
5. Pool accessories
  - a. Remove all accessories, including the ladder, from the pool.
  - b. Wash the ladder with water and neutral soap.
  - c. Wash the rest of the accessories with water and neutral soap.
6. Filter
  - a. Remove the filter from the pool.
  - b. Wash the whole filter with water and neutral soap.
  - d. Read the filter installation and maintenance manual.

### To empty, disassemble and store your pool:

First check the filter instructions to make sure that your filter has the 'option for emptying'.

Use 'the communicating vessels principle': first, completely submerge a hose in the pool until it is full of water, then, cover one end with your finger and take it out of the pool. Water will start to come out. Make sure to keep the other end of the hose submerged to empty the pool.



**Caution:** Keep into account the amount of water you are going to empty in order to avoid unnecessary surplus water on the site. Check at any time that the water flow out of the pool is properly evacuated. Otherwise, the excess of water could cause damage to people as well as material damage.

Always keep in mind the amount of water that will be drained in order to avoid any problem. It is useful to have a drain close.

After all the water is drained, carefully disassemble the pool. In order to avoid any damage, deformation or tear, disassemble the parts in the inverse order to the installation. Check all the parts to make sure that they are perfectly clean and dry before storage.

Prior to storing, wash the liner with water and neutral soap that does not contain any chemical products. To conserve the liner in optimum condition and avoid bad odors and humidity, wipe the liner on both sides and dry it with a cloth or paper towel.

To make sure that the liner is not pierced, fold and store it in a separate place.

Keep the pool sections and parts in their original containers.

Keep the sections and parts of the pool in a dry and covered place.

If any of the pool elements are damaged, replace them as soon as possible with original **TOI** accessories. See the address at the end of this manual.

### Assembled pool start up.

You should start up the pool at the beginning of the season. The proper procedure must be followed to avoid problems during the period of the year that the pool is used.

- a) Check that your pool equipment (filter, skimmer, cartridges) are in good condition and work correctly.
- b) If necessary, drain the pool and wash the liner with water and neutral soap or a disinfectant product. The liner must be cleaned when the sun is low. Maintain the walls and floor wet. Leave the product for a while and then rinse with water.
- c) When the liner is completely clean, fill up the pool.
- d) Begin the chlorination treatment. If it takes more than a day to fill up the pool, add the chlorine gradually throughout this time.
- e) To maintain the water in optimum condition, analyze the water pH and make sure it is between 7.2 and 7.6.

**To reassemble your pool**, follow the instructions beginning from the 'INSTALLATION' section.

For further information please contact: -

**Crystalclear Enterprises**  
**Hamilton Lodge**  
**58 Queens Road**  
**Chadderton**  
**Oldham**  
**Tel. 0161 345 1110**  
**E-Mail: [sales@cheshireluxurypools.co.uk](mailto:sales@cheshireluxurypools.co.uk)**  
**[www.cheshireluxurypools.co.uk](http://www.cheshireluxurypools.co.uk)**